

In the Name of Allah, Most Compassionate, Most Merciful...



CMLLI

416 McDermot Avenue
Winnipeg, MB R3A 0A9
ph: 204.944.1560
fax: 204.944.8712
email: infocanadamuslimleaders@gmail.com
web: www.canadamuslimleaders.ca

CANADIAN MUSLIM LEADERSHIP INSTITUTE

**OUR 21ST CENTURY CROSS CULTURAL
COMMUNITY LEADERSHIP
DEVELOPMENT PROGRAM**

CMLI provides leadership training to develop emerging Canadian Muslim leaders from the broad ethno-cultural diversity of our community.

PROGRAM SITE: Winnipeg, Manitoba

PARTICIPATING CITIES:

Edmonton
Toronto
Vancouver
Winnipeg

Year 1:

Capacity Building: Jan. 2010 to Jul. 2010

Year 2:

Mentorships: Sept. 2010 to Jun. 2011

OUR NEED FOR COMMUNITY LEADERS



Leadership matters today more than ever before; communities in Canada embrace this truth.

Successful community organizations don't wait for leaders to stumble along; they actively seek out individuals with leadership potential and expose them to new skills, knowledge and experiences that will develop their potential. They recognize that leadership development is a key capacity-building strategy that is fundamental to the health and success of community organizations and the Canadian community at large.

The Canadian Muslim community has recognized that as it continues to grow as a diverse multicultural and multi-ethnic community in every corner of Canada, there is a critical need to build and sustain current and future community institutions, thereby creating a robust community contributing to Canadian society. CMLI believes that to achieve this there is a pressing need for informed and active Canadian Muslim leaders to continue to develop capacity of Muslim communities in partnership with the larger Canadian community.



- Leaders are needed to build healthy, sustainable, cohesive communities
- We all belong to interdependent and overlapping communities
- Communities cannot survive without shared vision and shared goals
- Self-interest erodes the social environment on which we all depend
- The preservation of civil-liberties depends on the maintenance of civil society through civic engagement
- The focus on social justice is paramount



THE BENEFITS

This program's benefits are focused on you as the participant, the community and the CMLI sponsors.

THE PURPOSE OF CMLI'S CORE PROGRAM IS:

1. to develop leaders who can transform communities.
 2. to provide enlightened, educated, ethical, empowered, and motivated community leaders from varied backgrounds.
 3. to engender groups within the community to work together to meet future challenges.
 4. to encourage people to collaborate and work together to build solutions, and strengthen communities, and move toward a shared vision of an inclusive community.
- The point of identifying, training and developing the next generation of community leaders is that they become active builders and sustainers shaping a strong multicultural Canada.

WE PROVIDE...

TO YOU:

- A process to understand yourself, in the context of self leadership and our focus to surface and strengthen your passions, values, and capacity to make a significant difference in community.
- The opportunity to enhance and expand your knowledge related to how communities function; how they interact with each other, and how decisions are made that positively impact residents.
- An opportunity to share your meaning and value of community leadership, ways to think, and construct your future action to make a contribution to the community.
- A safe space to become involved as an active member of a unique and growing network of Canadian Muslim Leaders, who share the learning experience, describe their vision of the community and its future potential, interact with each other, and form meaningful and long-term collaborations.
- A distinctive opportunity to build a long-term relationship with a mentor who will assist you with skills, knowledge, strategies, and access to other networks and people to strengthen your leadership.
- A range of high impact tools and techniques to aid in understanding complex ideas and concepts by: engaging community and empowering others; becoming individuals who manage change; building and sustaining visionary action in community; and strengthening community organizations.
- A personal development plan for your leadership to grow, expand and be integrated into your community, your family and your work life.

TO THE COMMUNITY:

- An increased number of women and men who are committed to becoming community leaders and are representative of the multicultural, and multi-ethnic diversity of Canadian Muslims.
- A community leadership talent pool embodying the traditions of wisdom, consultation, justice, equity, freedom of thought and inner reflection and who continue to renew community.
- An increased number of innovative ideas and actions that serve to further develop the Muslim community's interests in a strong and inclusive Canada.
- A renewed and strengthened commitment by Muslim community leaders to engage the broader Canadian community and become leaders of the future.
- Increased community cohesion, based on shared leadership values, a shared vision of Muslim communities, and a recognition of their diversities.
- A reinvigorated determination to grow, strengthen, and renew the Muslim community by engaged and passionate people.

TO SPONSORS:

- The benefit of serving a perpetual charity with an educational end in mind, and ensuring a strong future for Canadian Muslims.
- The benefit of becoming a valued CMLI pioneer supporter by supporting a unique program within the Muslim community of greater Canada.
- The benefit of gaining satisfaction by enabling our emerging leaders to meet their potential and having a strong vision for the future of the Canadian Muslim community.
- The benefit of supporting an aspiring leader supported, mentored and guided during the program and resulting in leadership within our communities.

WHO SHOULD APPLY?

The participants of the CMLI will be selected for their character and their capacity to grow and learn. A class will consist of no more than 20 participants who will be between the ages of 18-40. They will be both men and women, Sunnis and Shi'as, and they will come from the multitude of cultures, ethnicities and backgrounds that comprise the Canadian Muslim community.

OUR PARTICIPANTS WILL NEED TO BE, OR HAVE:

- self-aware, mature individuals with insight, who can recognize and maximize personal impact.
- open to “new” learning techniques and to challenge common perceptions and understandings.
- strategic and systems oriented thinkers, who value relationships, connections to form networks and work across cultural and community boundaries.
- reflective and deeply critical thinkers who are able to learn from others, all situations and circumstances and think deeply and critically.
- courageous risk takers who are strongly committed to faith-based ethical and compassionate approaches to community leadership.
- passionate about contributing to & strengthening the Canadian Muslim community for generations to come.
- time and energy to commit and benefit fellow and future participants within the program.



OUR LEARNING OUTCOMES:

There will be a range of learning outcomes defined for each section of the program that you will be able to point to when you assess your growth and personal development during the two-years. For example this is a small sample of learning objectives CMLI has integrated into the program:

1. To identify and develop a range of leadership skills, knowledge and approaches to enable participants to actively participate in specific community leadership roles.
2. To deepen participants' self awareness, self development, and reflective practices.
3. To develop participants' understanding and respect for the diversity, dynamics and gifts of Muslim Canadian communities.
4. To increase participants' capacities to understand, and integrate new learnings within their community leadership work in complex systems.

HOW WILL OUR PROGRAM WORK?

CMLI's program will provide a safe space to meet and engage each other in dialogue on ideas, leadership skills, new knowledge and a range of learning assignments (individually and in teams).

The core program will take place within Winnipeg, Manitoba and within program hubs to be established across Canada in selected sites over the next few years. We will use a variety of community spaces for each component of the program.

Program facilitators, speakers, and mentors are inclusive of all Canadians, will implement the core program. The mentors for the second year will be carefully selected based on their reputation, knowledge, perspectives, and skills.

Our Learning Community

The unique trait of this model is that everyone associated within the program, from the design team, to the people who are coming to speak, engage, and interact with the participants are considered to be the "learning community". This concept is important as it clearly states that leadership learning is on-going; it is about how we engage and learn from each other; it is how we construct and act on our on-going community leadership journey together.

The Beginning

We construct a class of participants (for each two-year cycle) who will get to know each other over the two years. They will engage in peer learning on selected topics, listen and interact with speakers, facilitators and topic experts, and apply different "learning tools" throughout the program. The learning assignments will apply these "tools". Specifically, the program's focus is to have our participants to engage communities on their ideas and challenges and solutions that matter.

We have developed a program based on weekend retreats, where participants will be able to learn, engage each other, and grow friendships and long-lasting networks.

Our Skill Roundtables

In between our weekend retreats we will have evening skill round tables, where program participants will come together with facilitators and panelists to engage each other in topics selected to enhance their organizational capacities. These round tables will provide information, perspectives, and strategies on a range of important community institution building topics.

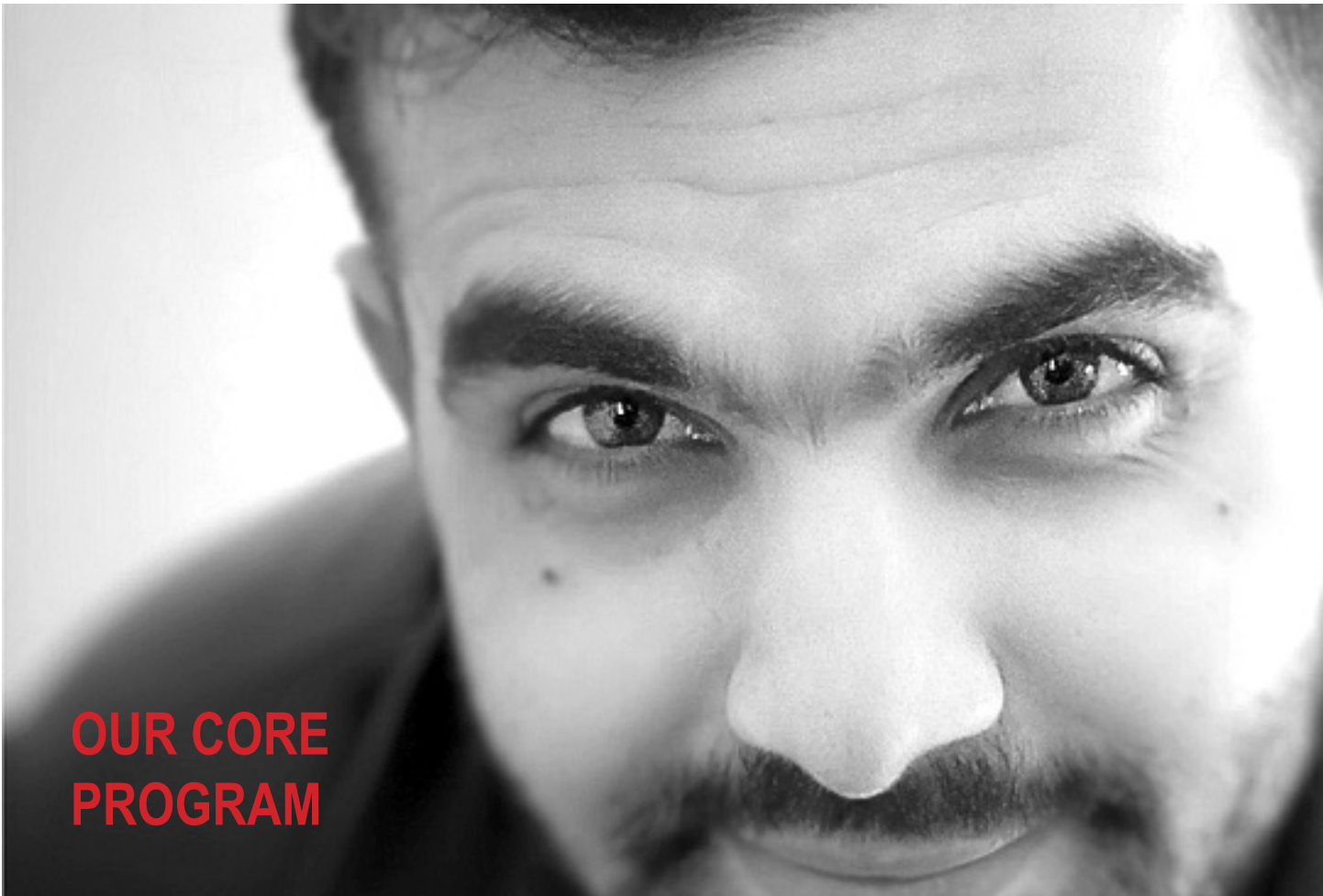
The Second Year

The second year provides participants with skilled mentors who will be developing joint plans to assist a community organization with an initiative that CMLI selects and meets its strategic objectives.

Alumni Assisting CMLI

Of course, we will celebrate achievements and plan to grow this group of participants into community leaders. We wish for each of the alumni to build a long-term relationship with CMLI. Alumni will be invited to be members of our committees, program facilitators, and, more importantly, as future mentors.





OUR CORE PROGRAM

This core program consists of two parts:

1. Capacity building in (Year One): starting in January 2010 and ending July 1, 2010, with a total of approximately 100 hours of involvement expected.

2. Mentorships linked to community projects in (Year Two): starting in September 2010 and ending July 1, 2011, with a total of approximately 100 hours of involvement expected.

Year One (2010) consists of:

- A “kick off event” in January 2010
- Weekend retreats (Friday evening till Sunday early afternoon) in January (22-24), March (19-21) and June (11-13)
- Skill and Knowledge Roundtables (evenings from 6:00 - 9:00 p.m. in February (10 and 17), March (10 and 17) and April (14 and 21)
- Individual and Team Learning Assignments between each retreat
- Community Celebration event (June 2010)

Year Two (2010) consists of:

- An alumni retreat in September 2010
- Mentorship match to community or non-Muslim mentor
- Mentorship matched to selected community project
- Four “master” classes throughout the year (TBA)
- Community celebration and commencement ceremony (June 2011)

HOW TO APPLY

Our selection process begins with an application form. The form must be submitted to CMLI no later than **DECEMBER 4, 2009**.

The selection process consists of three components: a review of the application form, a review of the attached reference letters and (if the information you supply meets our criteria) an interview process and/or small group simulation.

Selection is based on the success of each of these components.

Final selection of program applicants will take place on DECEMBER 15, 2009.

An application is available and downloadable from our website located at: www.canadamuslimleaders.ca/application-form-for-program-2010 or by calling CMLI's offices at 204.944.1560.

For more information, or to have an informal discussion with our Program team, please don't hesitate to contact us!

Canadian Muslim Leadership Institute (CMLI)
416 McDermot Avenue
Winnipeg, MB R3A 0A9
ph: 204.944.1560
fax: 204.944.8712
email: infocanadamuslimleaders@gmail.com
web: www.canadamuslimleaders.ca

CANADIAN MUSLIM LEADERSHIP INSTITUTE STRUCTURE

Board of Directors

Winnipeg:

Omar Siddiqui
Mohamed Eltassi
Mariam Omar
Siddeek Ali
Naweed Raza
Alia Harb

Toronto:

Selma Djukic

Fort McMurray:

Noha el Banna

Program Design Team

Nadia Kidwai
Ludmila Zamah, Ph.D.
Sid Frankel, Ph.D.
Selma Djukic (Toronto)
Noha el Banna (Fort McMurray)
Brendan Nagle
Dr. Sana Ahmed (Vancouver)
Martin Itzkow

Sponsorship Team

Austin Abas
Abdo Eltassi
Iqbal Siddiqui

Program Facilitators

Martin Itzkow (Lead)
Sid Frankel, Ph.D.

